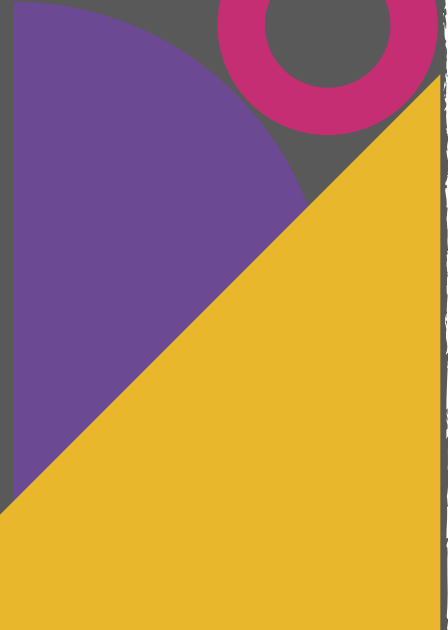


WELCOME
family & friends



***Our translator for this evening
is MS. Aurelina Ramirez***



THE MODERATOR

OUR MODERATOR FOR THE EVENING WILL BE MS. JADE MCCLINTON- DORLEY

WCHS ALUMNI CLASS OF 2019





Parent Leadership Council

MEET OUR PLC COUNCIL MEMBERS



**OUR PLC PRESIDENT
CHEVONNA HARDY**



**OUR PLC VICE
PRESIDENT CHERYL
MCFADDEN**



**OUR PLC SECRETARY
ROXANNE LIVERPOOL**



OUR PARENT COORDINATOR

MS. MELODY PINK

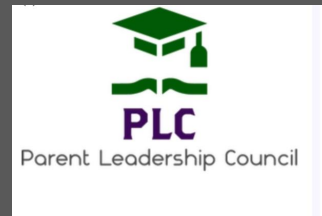




Quick Virtual Housekeeping With Ms. Liverpool & Ms. Pink

- **Please Mute your Screen & Mute your Phones**
- **Please Do Not Click Present or Hook your Screen to the TV (It Interferes with the Presentation)**
- **Please Type your Name, Scholar's Name & Email Address in the Comment Section for Attendance ** Families on the phone please email Ms. Pink your name,scholar's name & grade**
- **Please type any Questions in the Comment Section relating to the Meeting**
- **NOTE: This PLC Virtual Meeting will be recorded & posted on our school website**

ATTENTION PARENTS



**PLC ELECTION
RESULTS WITH
MS. PINK**

SCHOOL UPDATES WITH OUR PLC SECRETARY MS. ROXANNE LIVERPOOL

The PLC is composed of 3 Parent Volunteers. We meet monthly with school Leadership to discuss topics of concern. At the meeting we had on October 14, 2020, the following topics were discussed:

- Chromebook update on distribution to scholars
- In-person Instruction
- COVID-19 uptick in numbers and how it will affect in-person learning
- Tentative new schedules for the upcoming trimester
- Extending the school day for scholars to include math and science 4 times a week
- Scholar attendance at teacher's office hours

SCHOOL UPDATES CONTINUED

- The College and Career Office Concerns
- The need for SAT Prep offered by the school
- PLC wants to bringing valuable mentorship to the scholars
- Ensuring parents know the scholars support network in the school
- The National Honor Society
- The PLC requested data on scholar attendance, average SAT score and average grades for the 2019 and 2020 school year

Parent Leadership Council



PLC

Come Join Us for This Mandatory Parent Meeting

November 19th @ 6 pm - 7 pm

The State of Our School

Changing the Tide

Agenda

School attendance * Remote learning * Grades * STAR testing

SAT scores * College readiness * Parent participation * Intervention plan

Closing the gap

Supporting your Scholar Part 1 with our PLC Vice- President Ms. McFadden

Making Your Scholar's Teacher List / Teacher Cheat Sheet

This list will provide quick access to your scholar's teacher's information. Discuss with your scholar how he/she feels about each class. If there is a class your scholar feels is difficult, and may struggle to pass that class. Place a checkmark next to it. Some scholars may have no class and others may have multiple classes. You should put your scholar's Academy Leader on your list as well. This list should include the Following: Teacher's Name, the subject they teach, and Email address. Academy Leader's Name and Email address.



Teacher Cheat Sheet

**Teacher Name
Address**

1. _____
2. _____
3. _____
4. _____
5. _____
6. _____
7. _____
8. _____

Class Subject

Email

Academy Leader's Name

Email Address

Supporting your Scholar Part 2

Now that you have identified the class your scholar will need additional support. Send that teacher an email. Your email should include the following:

Your name and scholar's name.

Explain your concerns and scholar's concerns about the class.

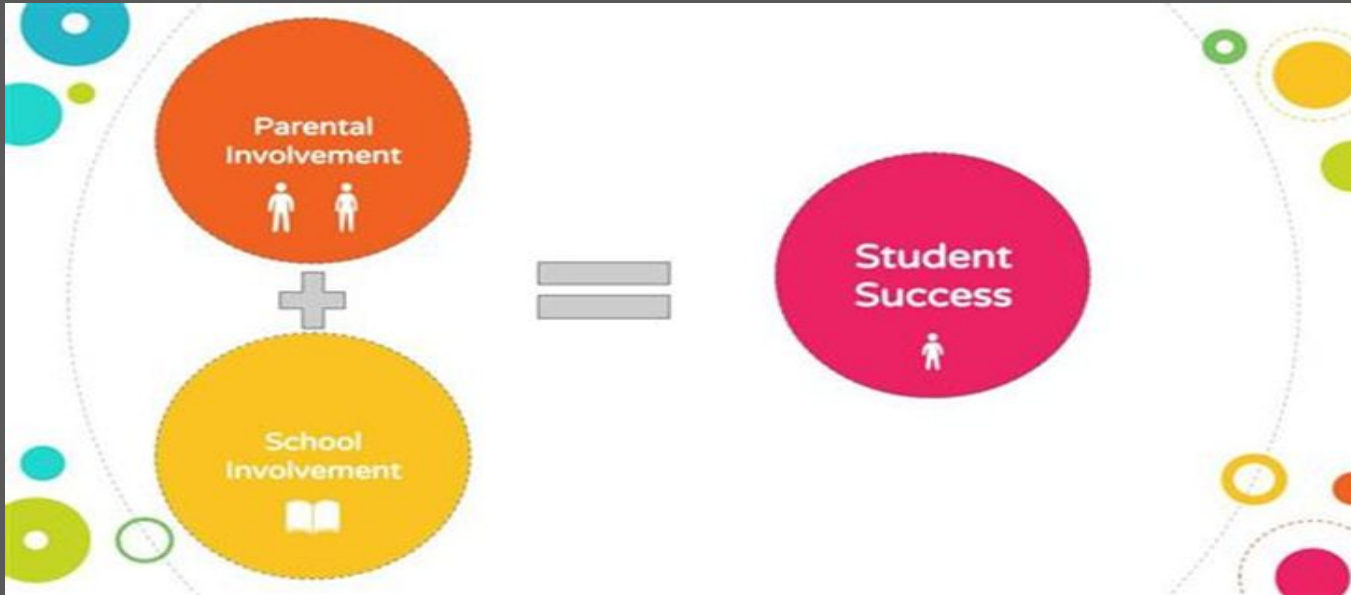
Ask your scholar current grade in the class and if your scholar is missing assignments.

Make sure to include your current phone number.

The purpose of this exercise is to show your scholar you are on top of their grades. Therefore, they need to be on top of them as well. It also lets them see you are concerned about their Education. Sending this email will give your scholar time to submit missing assignments and seek additional support from their teachers during office hours before they fail the class.



“The research is overwhelmingly clear: when parents play a positive role in their children’s education, students do better in school”





The PLC is having a Harvest Raffle

To enter the raffle and win a prize from the PLC

Send an email to plc@thewcs.org

Include:

1. Your name
2. Your scholar's grade
3. The word "Harvest"

The raffle drawing will be held live at the next PLC meeting November 19th @ 6pm

Only one entry per person. You must be present at the meeting during the raffle. If you are not in attendance, another name will be drawn.

You can send your email now until November 18th @ 5pm



WILLIAMSBURG
CHARTER HIGH SCHOOL



**NATIONAL
HONOR
SOCIETY**



WHAT IS N.H.S.?

- The National Honor Society (NHS) is the nation's premier organization established to recognize outstanding high school students. More than just an honor roll, NHS serves to honor those students who have demonstrated excellence in the areas of scholarship, leadership, service, and character.



When and How do I join N.H.S.?

- Students with a cumulative GPA of 85% or higher are invited to join in the Fall of their Junior Year.
- There is an Interest Meeting to explain the organization and the application process.
- Students must complete and submit an application
- Interview
- Induction is usually in October



Students must demonstrate the following:

1.) Good Character

2.) Scholarship - to create enthusiasm

- A scholarship is an award of financial aid for a student to further his or her education. Scholarships are awarded based upon various criteria, which usually reflect the values and purposes of the donor or founder of the award. Scholarship money is not required to be repaid

3.) Leadership - to promote

4.) Service - desire to render



The BENEFIT of N.H.S.

- College Applications
- Give back to your school/community
- Leadership Opportunities



EXPECTATIONS

- Active participation during Junior and Senior year in NHS, including 15 service hours per trimester, participation in NHS projects, and meeting attendance is required.
- Personal behavior and academic integrity befitting the tenets of NHS must be adhered to at all times.

High **EXPECTATIONS**
are the key to everything

- Sam Walton

-

Class of 2021 & Class of 2022



- ❖ Currently we have 24 members from the Class of 2021 that were Inducted in October of 2019
- ❖ On Wednesday, October 28th 27 students from the Class of 2022 were Inducted into the National Honor Society.
- ❖ This is the highest number of members we have in the organization to date at the Williamsburg Charter High School.



National Honor Society



SCHOOL HAPPENINGS AND RESOURCES FROM YOUR PARENT COORDINATOR MS. PINK

One of our students recently suffered a tremendous loss. His home caught fire and he and his family were seriously hurt. Our student was hospitalized and is in serious, but improving condition. As a result of the fire, his family lost all of their belongings. This is horrific during the best of times, let alone during the COVID pandemic.

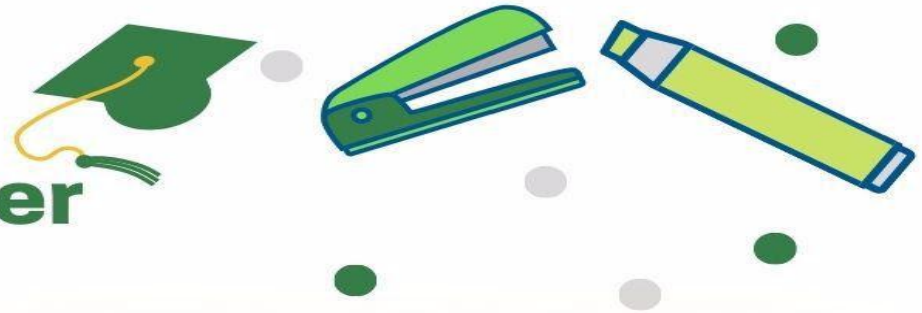
The staff of WCHS are working together to help our student and his family and we are asking for your support. Please consider donating to our GoFundMe.

<https://charity.gofundme.com/o/en/campaign/wchs-student-hurt-in-fire-that-destroyed-home>



WILLIAMSBURG
CHARTER HIGH SCHOOL

Parent/Teacher Conferences

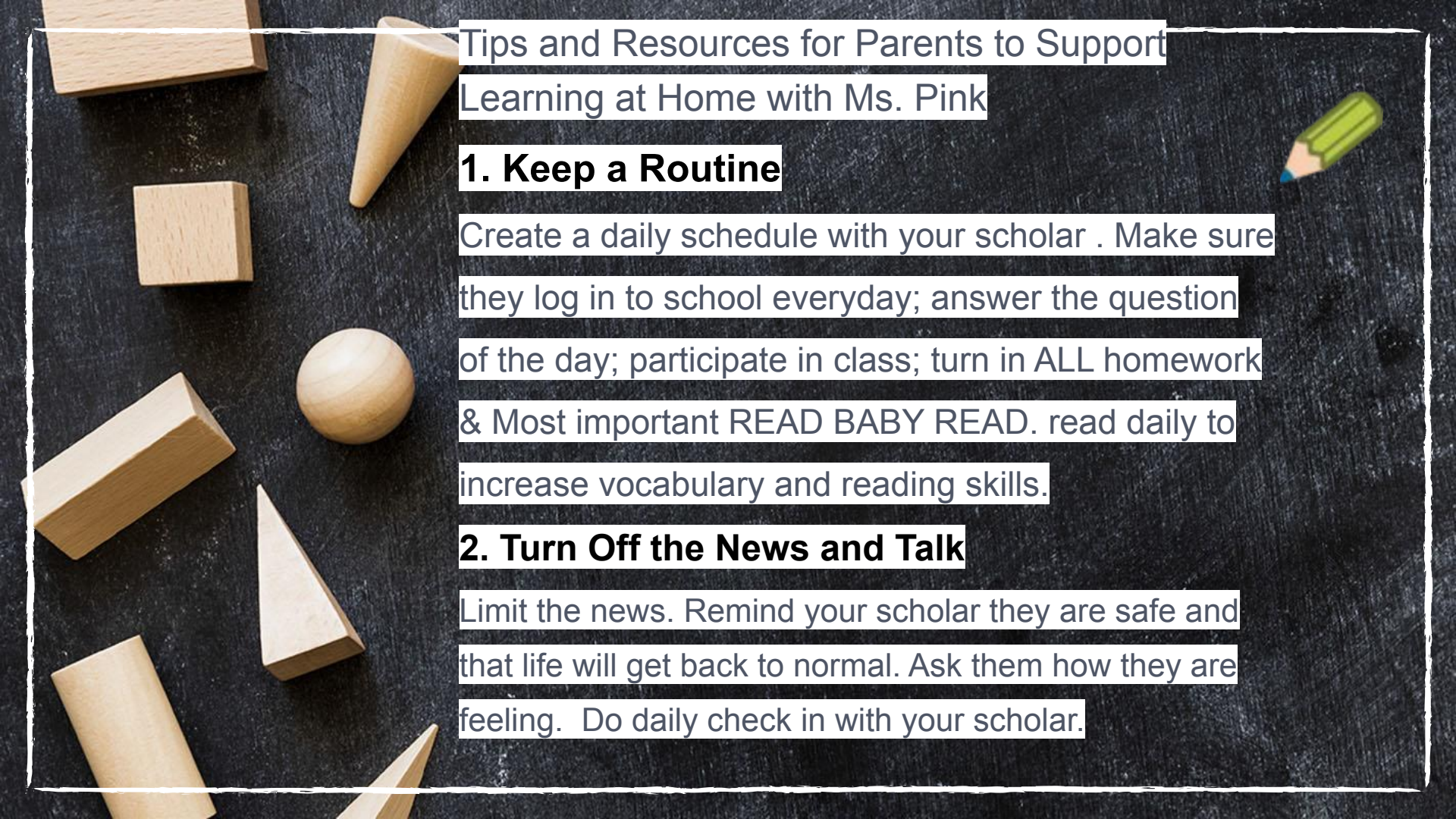


REVISED SAVE THE DATE

November 4th 2PM - 7PM

November 5th 12PM - 3PM

**We look forward to seeing you at our virtual
Parent Teacher Conferences!**

The background of the entire image is a dark, textured surface, possibly a chalkboard. On the left side, there are several light-colored wooden geometric shapes: a large rectangular block at the top left, a smaller square block below it, a triangular block, a sphere, and several other rectangular and triangular blocks of various sizes. On the right side, there is a green pencil with a blue eraser and a sharp lead tip, angled downwards.

Tips and Resources for Parents to Support Learning at Home with Ms. Pink

1. Keep a Routine

Create a daily schedule with your scholar . Make sure they log in to school everyday; answer the question of the day; participate in class; turn in ALL homework & Most important READ BABY READ. read daily to increase vocabulary and reading skills.

2. Turn Off the News and Talk

Limit the news. Remind your scholar they are safe and that life will get back to normal. Ask them how they are feeling. Do daily check in with your scholar.

Resources from Ms. Pink

P-EBT REMINDER

If you have not received a P-EBT food benefit for your child, please contact the State using one of the following:

****NEW! State P-EBT Contact Form****

[Click here](#) to complete the contact form.

NY State P-EBT Helpline: 1-833-452-0096

The helpline is staffed 8:30am – 5:00pm, Monday – Friday.

TO REACH A REPRESENTATIVE: Select your language, then stay on the line. It will go through a menu of options, but just stay on the line and do not make any other menu selections. This is the fastest way to reach a representative.

P-EBT INFORMATION

https://otda.ny.gov/SNAP-COVID-19/?fbclid=IwAR1VcTKJPHj-IRcNvSxTslkrENewqGCg4_ktX4yt0OH4l6efbek6frKBc-s



**GET TESTED!
GET TESTED!
GET TESTED!**



FREE COVID-19 TESTS

Visit **NYC.Gov/COVIDTest**



FREE flu shots

no cost to you with most insurance¹



https://www.walgreens.com/topic/pharmacy/seasonal-flu.jsp?ext=msnFY21_Flu_NB_BMM_Flu_NB_Free_BMM_Broad_+where_+can_+i_+get_+a_+free_+flu_+shot&sst=4c3b868b-523f-439c-838c-773cd9ecfc8c&msclkid=d842081afa831d1140b05781e5e00118

- 
- REMEMBER I'M JUST AN EMAIL AWAY

(MPINK@THEWCS.ORG) Mon - Thurs 9am-2pm

- IF YOU WOULD LIKE TO MEET WITH ME, JUST SEND AN EMAIL & I WILL SEND A LINK FOR AN INSTANT GOOGLEMENTS MEETING.
- FAMILIES PLEASE ATTEND ALL SCHOOL MEETINGS VIRTUALLY & PARENT WORKSHOPS, IT'S ALL FOR YOU
- LIKE US ON INSTAGRAM & FACEBOOK FOR UPDATES, RESOURCES & MORE...

Contest Winner Announcement - PLC Council President

Ms. Hardy

The Winner of the Hispanic Heritage
Month " Now you're cooking " Contest

MS. Gladys Rodriguez

arroz con salchichas y habichuelas, malanga, bistec y
ensalada de lechuga, tomate y aguacate rociado con
queso parmesano.

(rice and sausages with beans, taro root, steak and a
salad of lettuce, tomatoes and avocado sprinkled
with parmesan cheese





PLC

Parent Leadership Council

PLC Contact Information

PLC EMAIL : plc@thewcs.org

*Note: Contact the PLC for All
Parent Concerns.*

CLOSING REMARKS FROM OUR PLC COUNCIL PRESIDENT CHEVONNA HARDY



**OUR NEXT PLC MEETING IS ON
NOVEMBER 19TH, 2020 AT
6PM**